



Aerosol Assist[®]



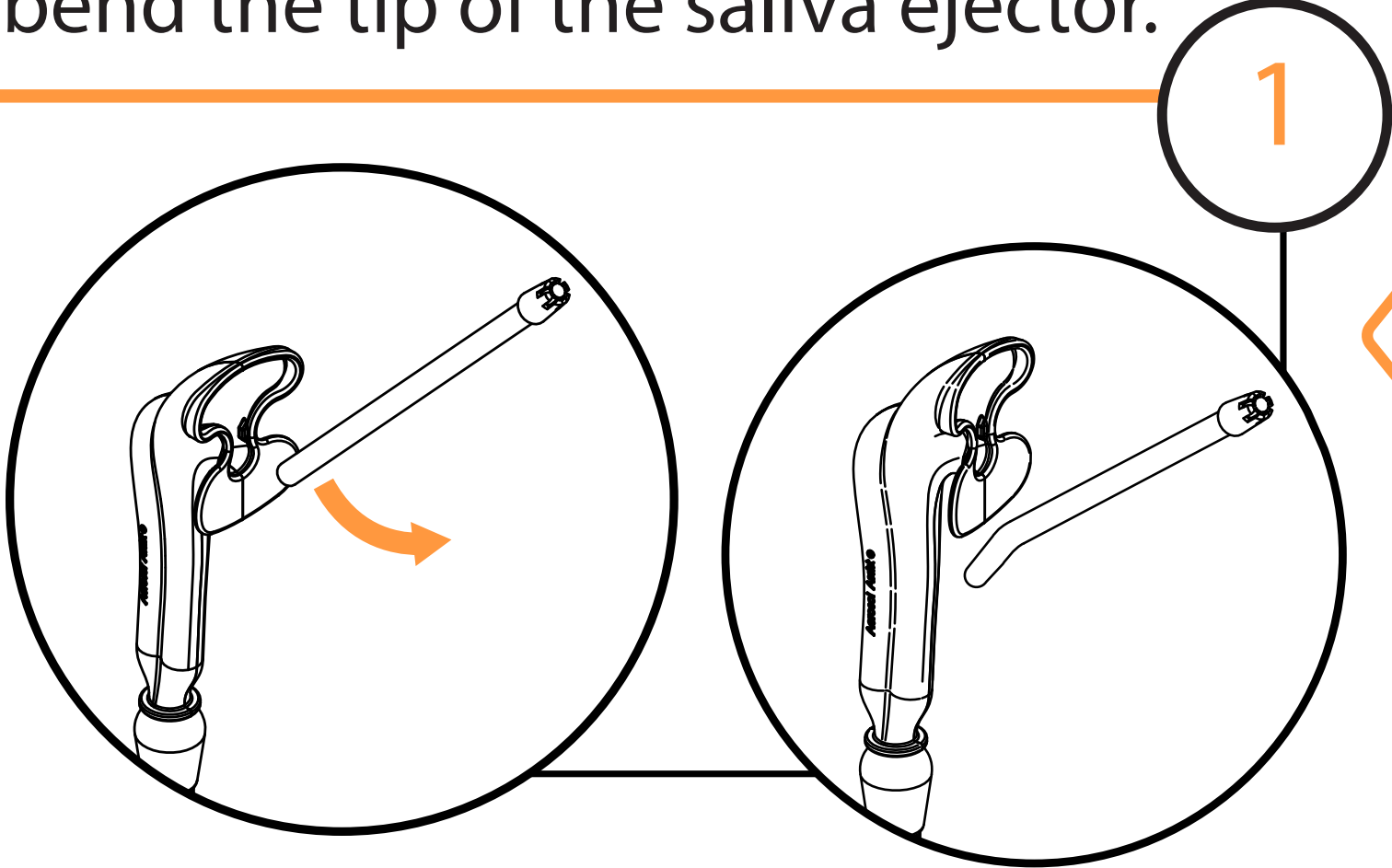
Hands Free Aerosol
Suppression System

Breathe Easy!

(Quick Start Guide)

Set up and Installation

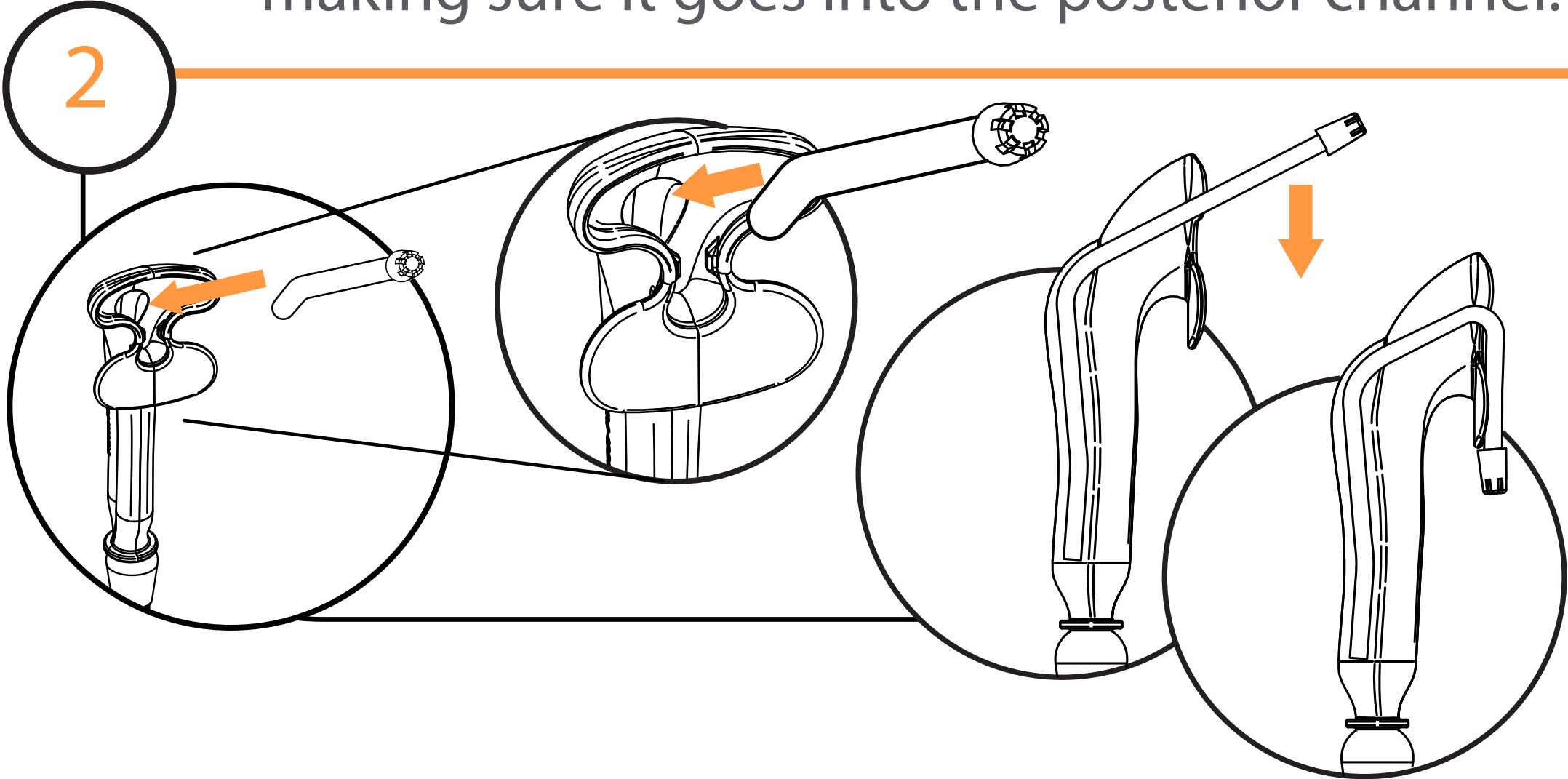
Slightly bend the tip of the saliva ejector.



Tip: It is recommended to flush the interior of the Aerosol Assist with water to lubricate the walls, so the saliva ejector is installed smoothly.

Install the saliva ejector into the saliva ejector port making sure it goes into the posterior channel.

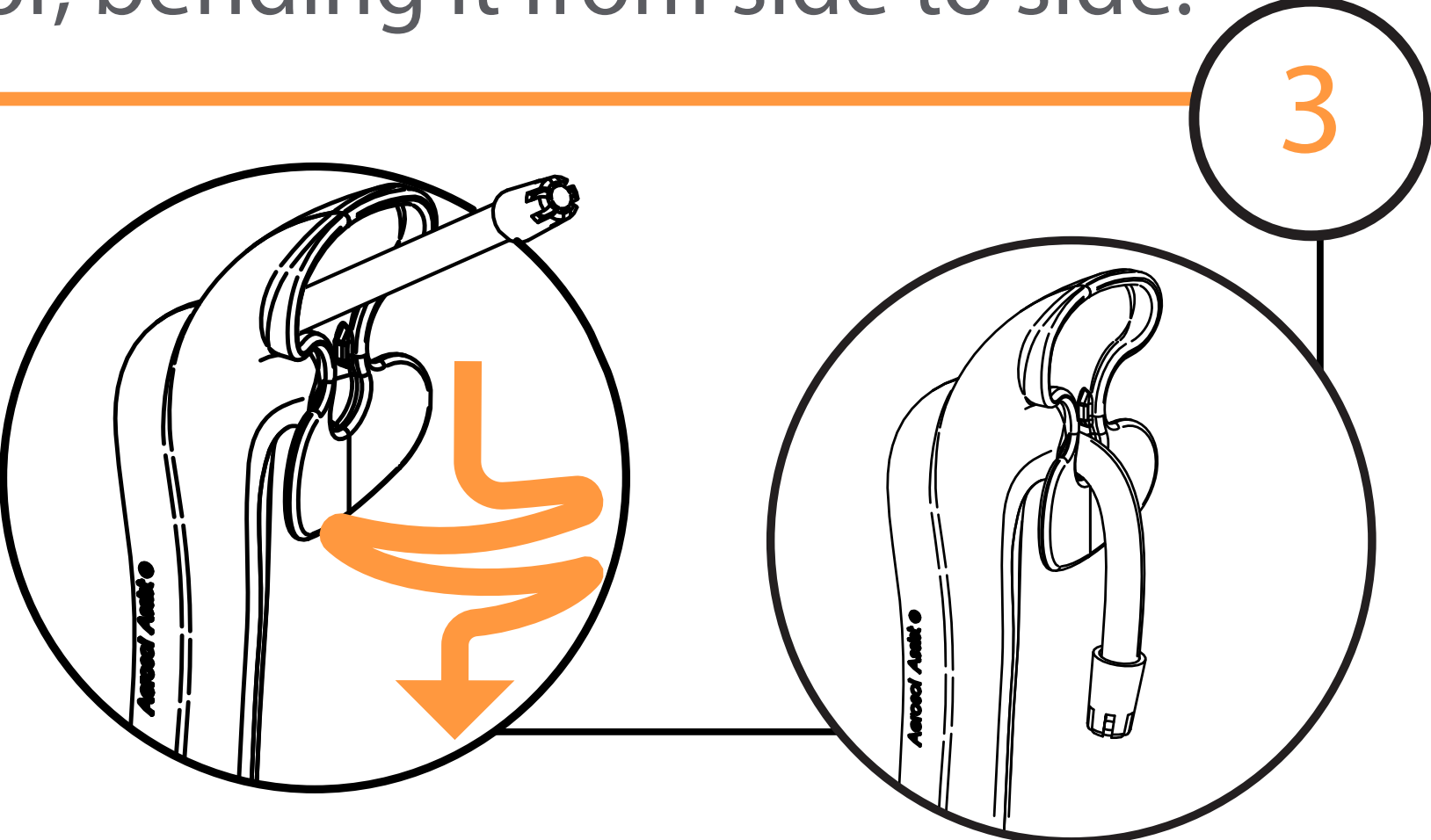
Inserting the saliva ejector to the deepest length can be visualized by bending the saliva ejector tip down towards the buccal plate and noting that the rear of the tip of the saliva ejector is flush with the Aerosol Assist bottom of the buccal plate.



Bend the saliva ejector, but do not pass the pinch point in order to visualize maximum insertion depth.

Set up and Installation

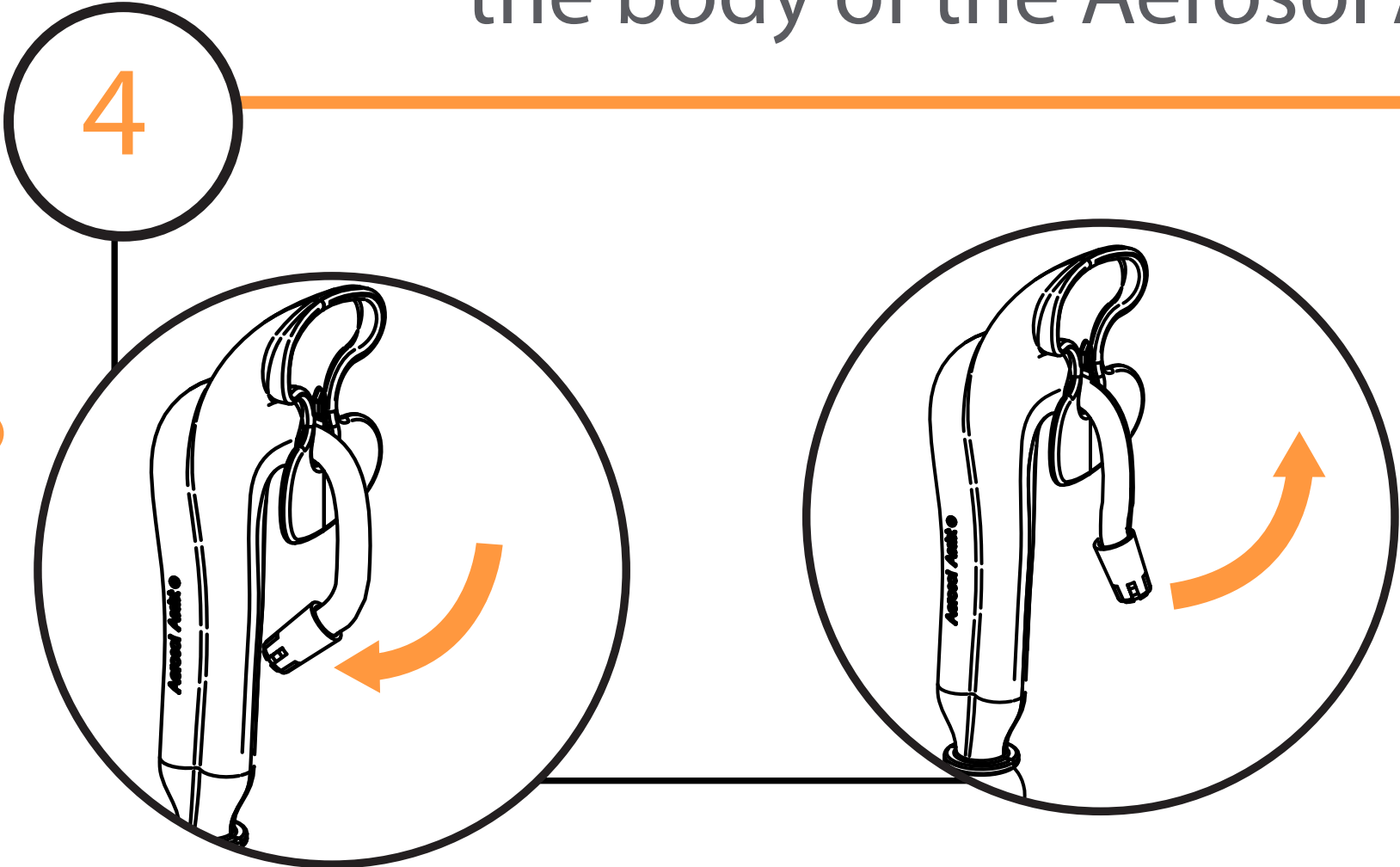
Holding the Aerosol Assist, pull down on the saliva ejector, bending it from side to side.



Tip: As you pull down, the saliva ejector should go beyond the pinching point and lock into position.

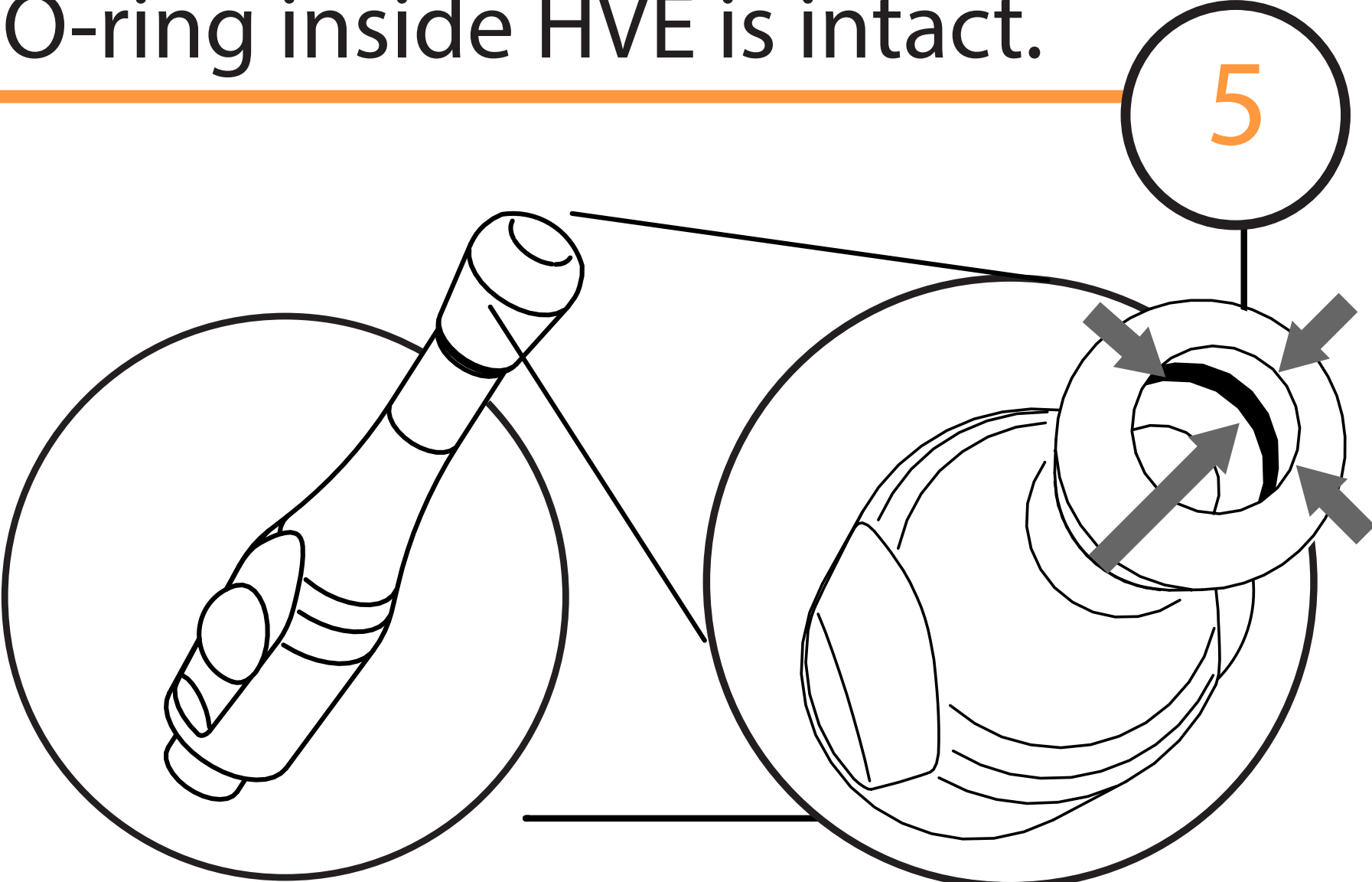
Once you release, it will go into a position that will not rest on the patient's anatomy, but will hover over it. The ideal position varies from patient to patient but should avoid gag reflexes, any anatomical landmarks (Teeths, Gums, Pterygomandibular raphe) and be deep enough to remove intraoral fluids.

Bend the saliva ejector so that it touches the body of the Aerosol Assist.



Set up and Installation

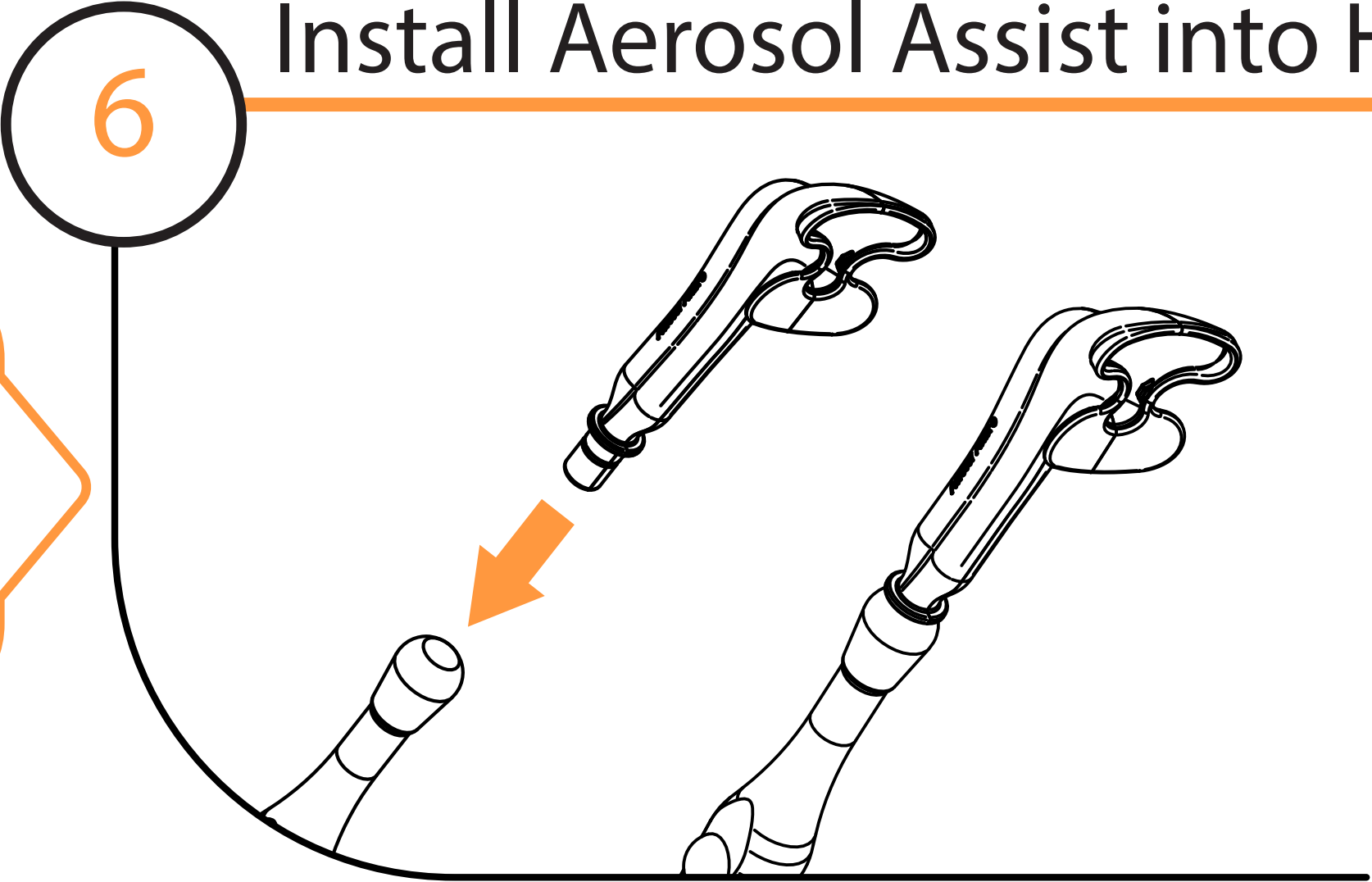
Verify O-ring inside HVE is intact.



Warning:
Do not use if O-ring is missing in HVE. Contact your trusted dental service technician to replace worn out/ missing O- ring.

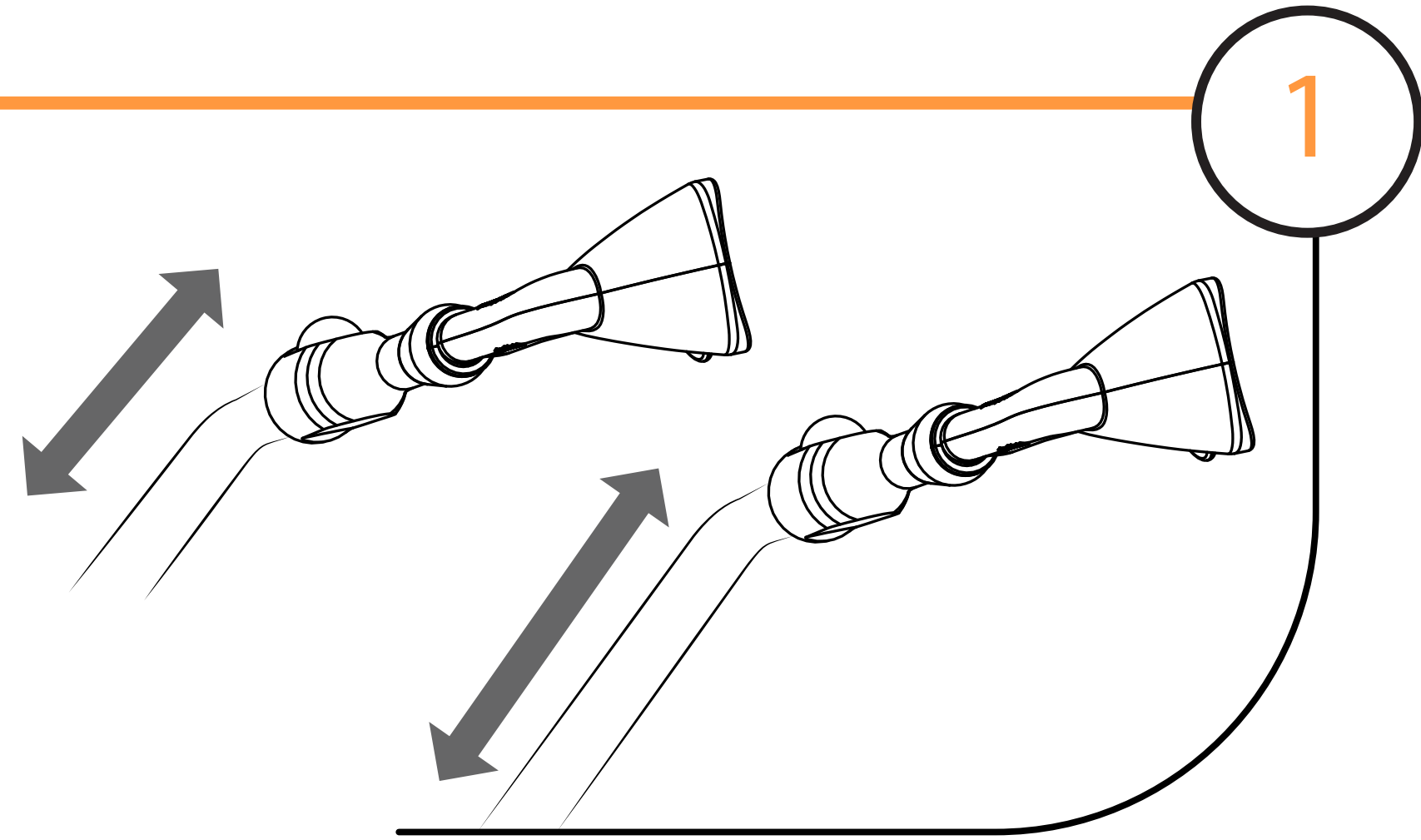
Caution:
Do not use if the Aerosol Assist connection does not support the weight of the HVE valve and hose.

6 Install Aerosol Assist into HVE.



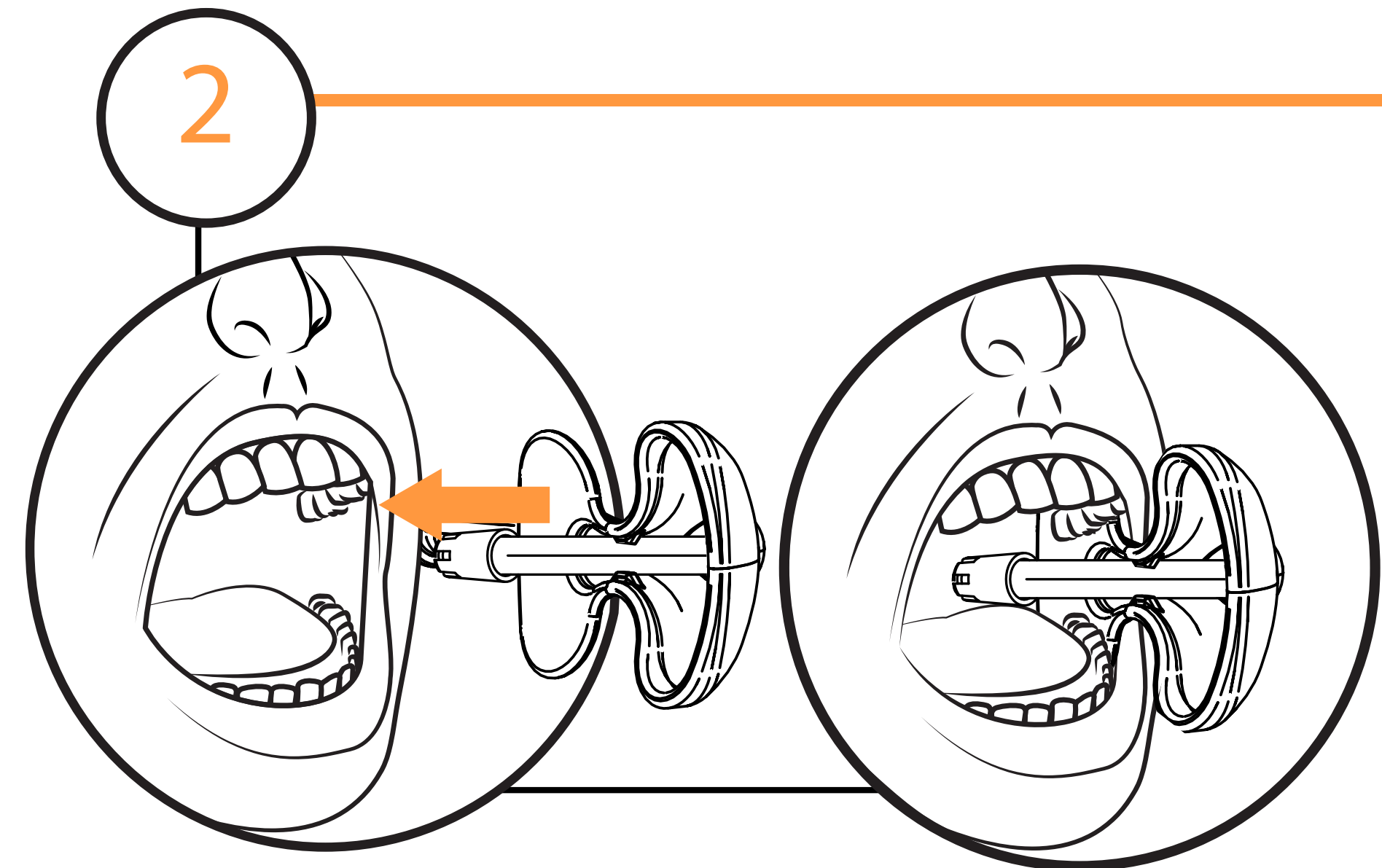
It should be loose enough to allow for easy rotation, but not fall out.

How to Operate



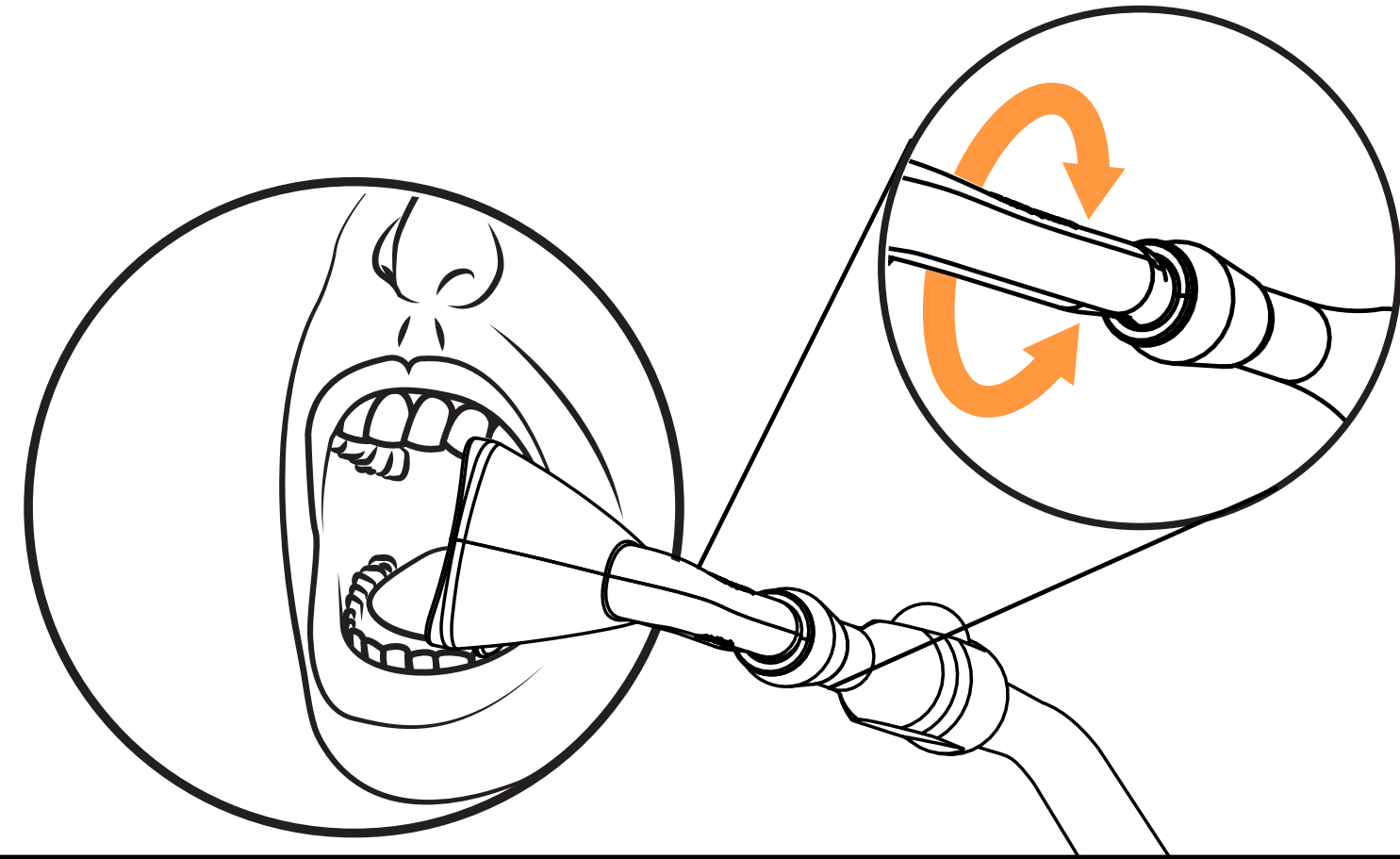
Route HVE hose around the chair and other obstacles to avoid creating unnecessary tension. If the HVE is too short, a longer one should be considered.

Insert buccal plate so that it's positioned between the teeth and cheek.



How to Operate

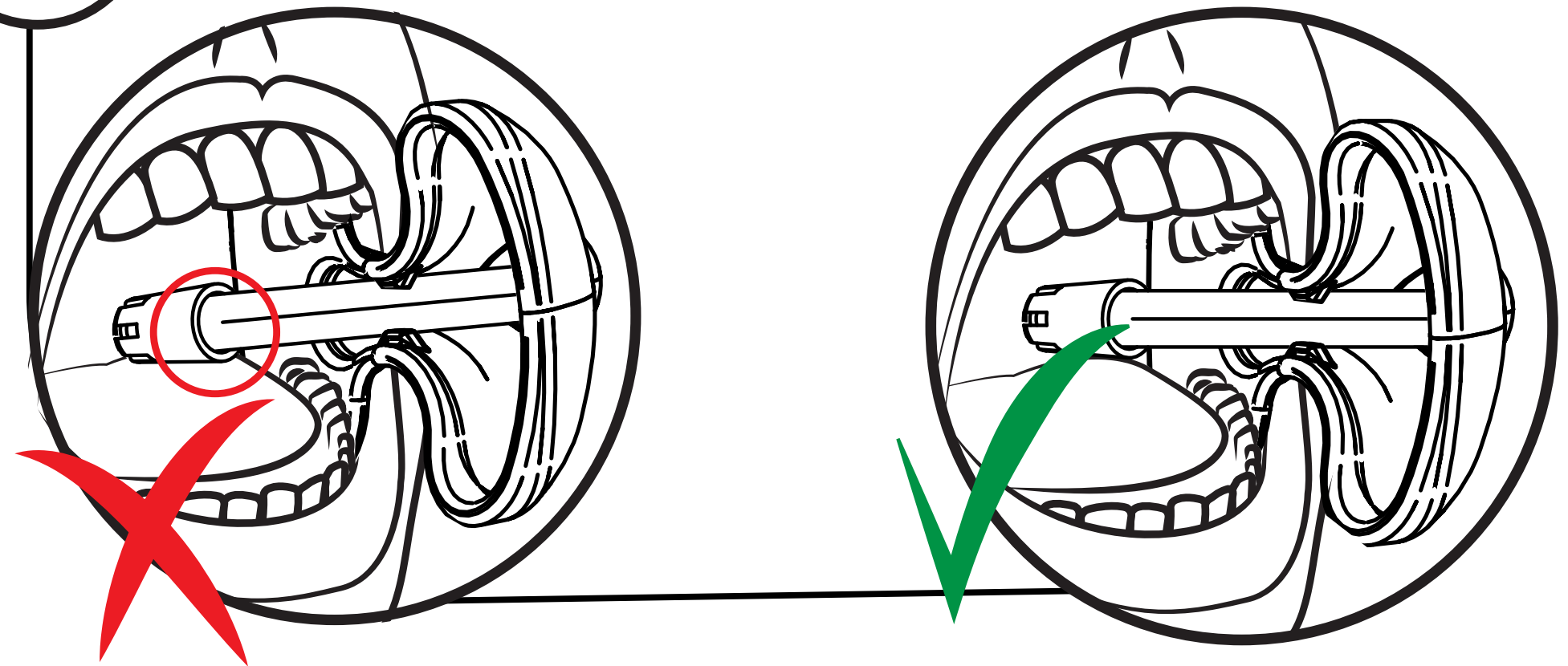
3



Rotate the Aerosol Assist to release any torque from the HVE Hose.

Make sure the saliva ejector does not rest on teeth, gums, or other anatomical components.

4



The saliva ejector should only touch the surface of any tissue.

Cleaning and Sterilization



1• Remove biomatter and other debris from the suction channels using a tube brush with a neutral pH enzymatic cleaning solution.

2• The brush must access both channels coming from the top and the bottom of the Aerosol Assist.



Warning: All Aerosol Assist MUST be cleaned and sterilized.

Cleaning and Sterilization



3 • Rinse with tap water

4 • Dry

5 • Autoclave Sterilization Cycle
30 Minutes @ 121 Degrees Celsius
at a minimum 15 PSI



Warning: All Aerosol Assist MUST be cleaned and sterilized.

When sterilizing make sure that the Aerosol Assist:

- Has aerosol port opening facing upwards.
- Placed in the top rack of the autoclave.
- Not in contact with other instruments.
- Does not have any load bearing weight placed on top of the Aerosol Assist.

Aerosol Assist[®] Patent Pending

For more detailed
instructions and videos,
please visit:

www.aerosolassist.com/setup/



www.aerosolassist.com

Designed in Miami, USA by Pivatool, LLC